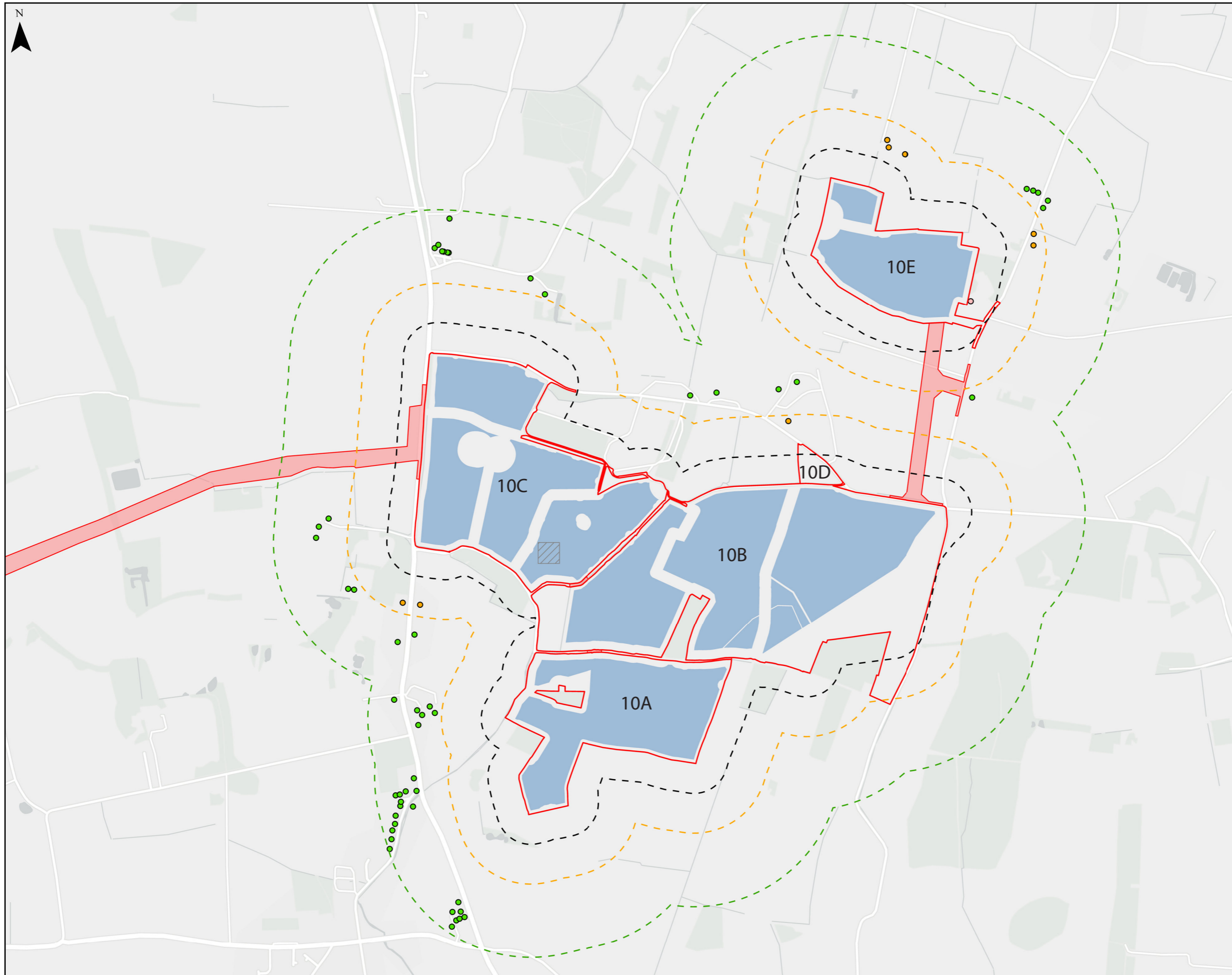


LEGEND:

- Site Boundary
- Cable Route Corridor
- Works No.1
- Works No.2
- Works No.3a
- Works No.3b
- Works No.4

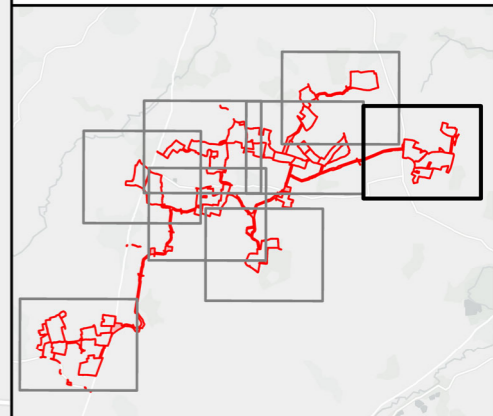
Buffers taken from Scheme

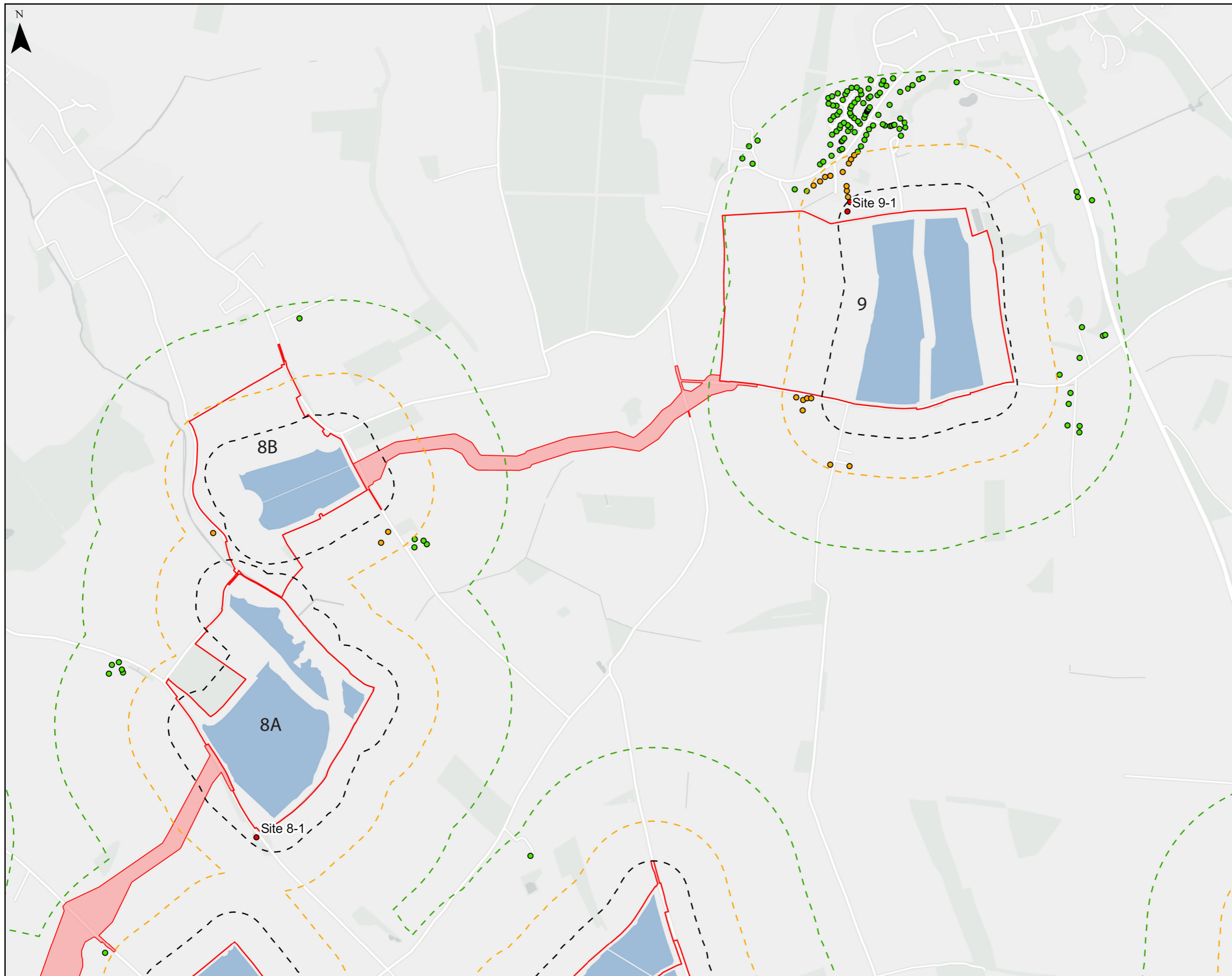
- 100m
- 250m
- 500m
- Residential Properties within 100m
- Non-residential Properties within 100m
- Properties within 100m-250m
- Properties within 250m-500m



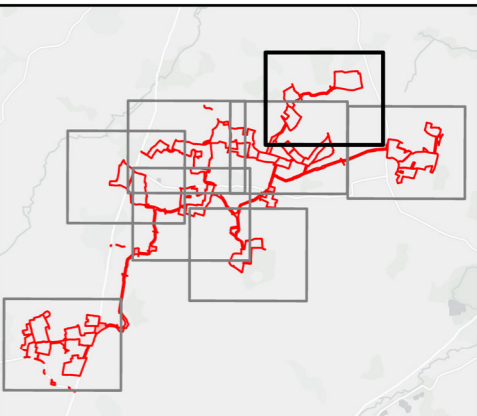
- LEGEND:**
- Site Boundary
 - Cable Route Corridor
 - Works No.1
 - Works No.3b
- Buffers taken from Scheme
- 100m
 - 250m
 - 500m
- Residential Properties within 100m
 - Non-residential Properties within 100m
 - Properties within 100m-250m
 - Properties within 250m-500m

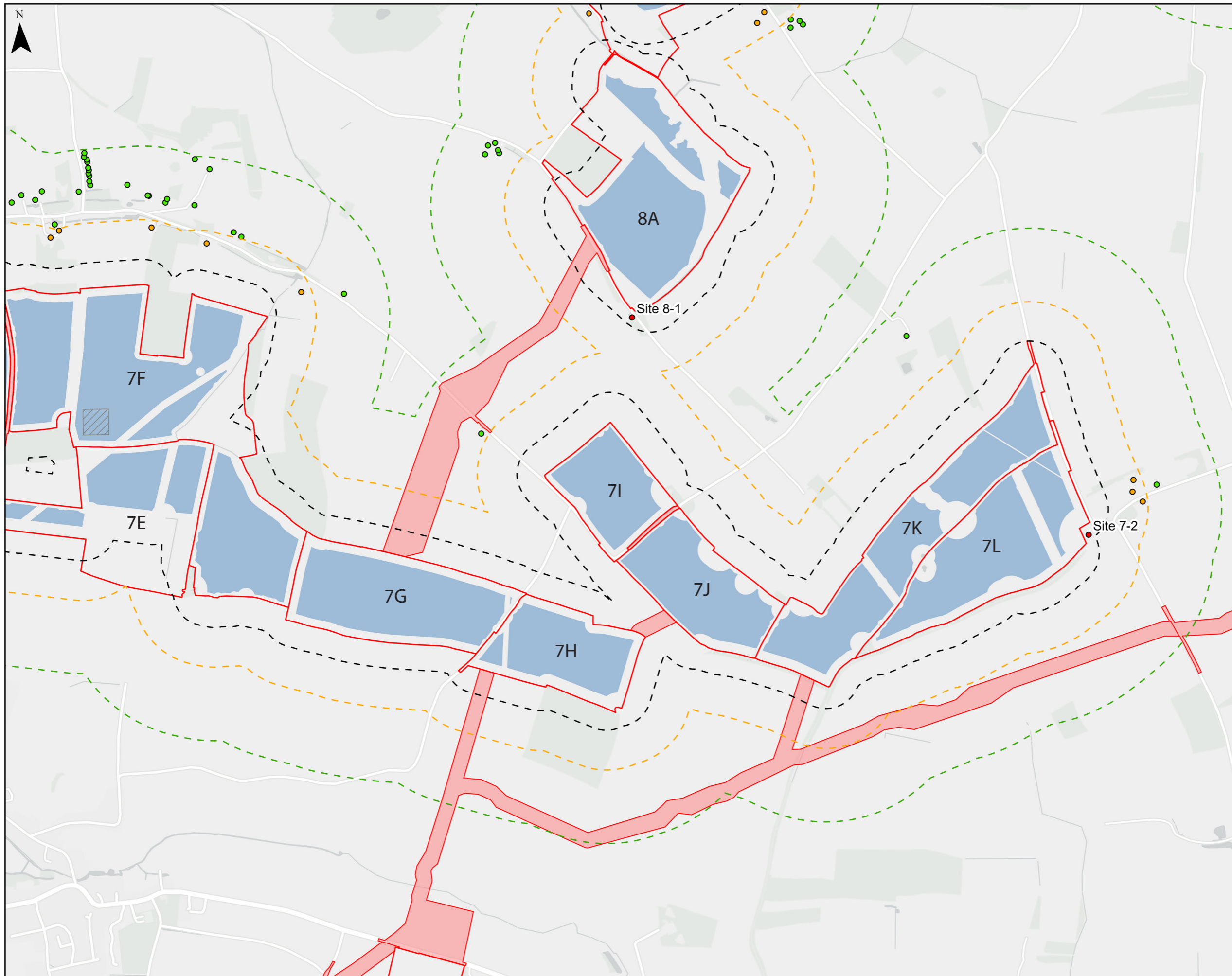
NO Residential Properties within 100m





- LEGEND:**
- Site Boundary
 - Cable Route Corridor
 - Works No.1
- Buffers taken from Scheme
- 100m
 - 250m
 - 500m
- Residential Properties within 100m
 - Properties within 100m-250m
 - Properties within 250m-500m
- Residential Properties within 100m
- Site 8-1: Dawsons Farm
- Site 9-1: Brooke Manor & Annexe

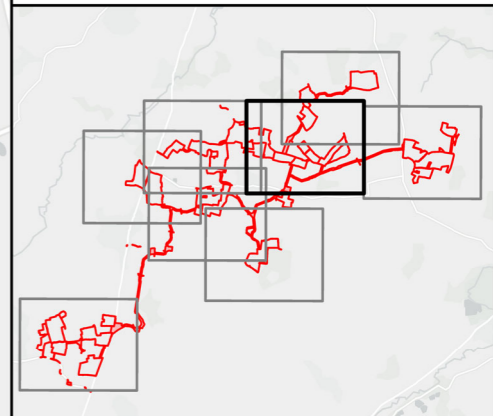


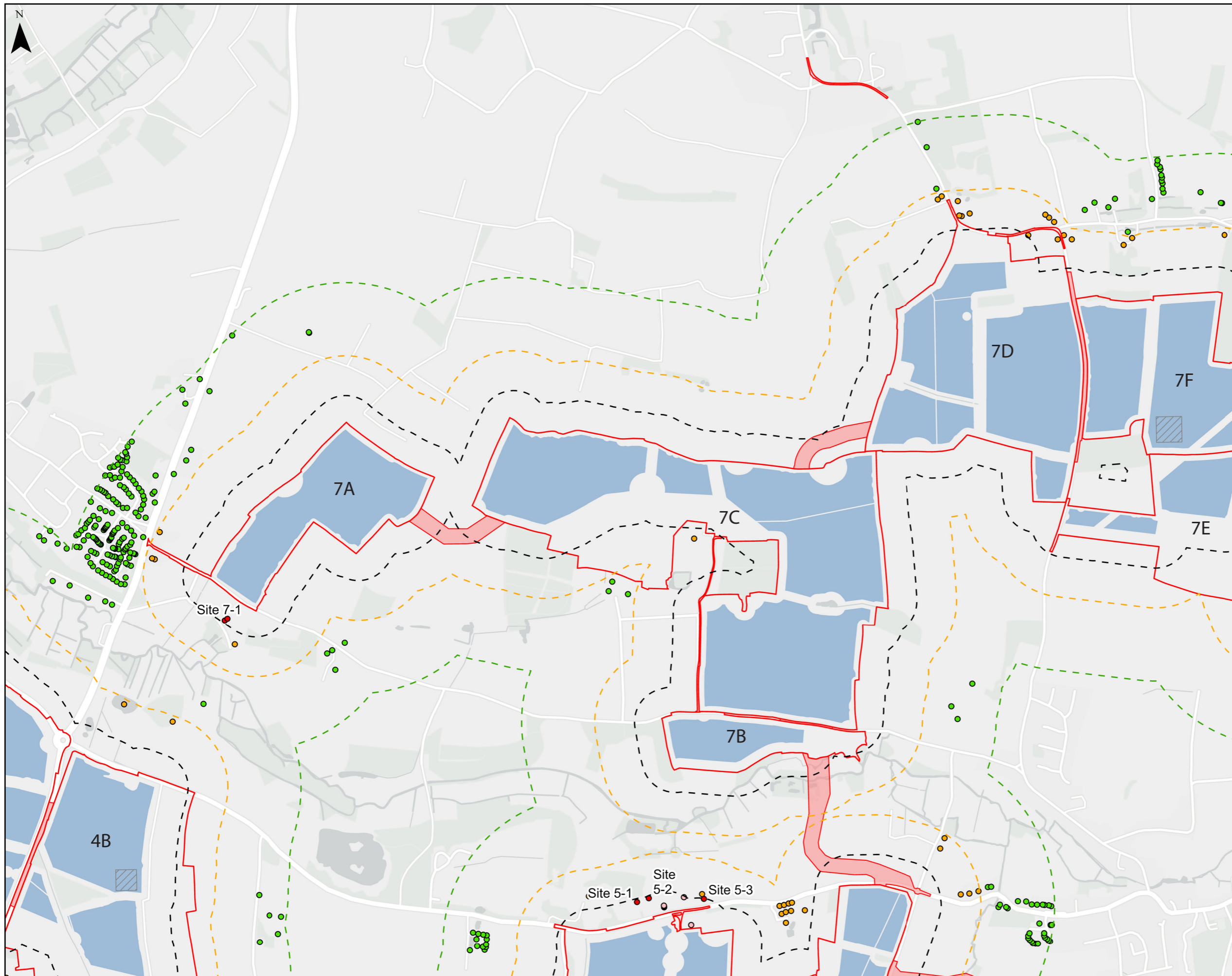


- LEGEND:**
- Site Boundary
 - Cable Route Corridor
 - Works No.1
 - Works No.3b
- Buffers taken from Scheme
- 100m
 - 250m
 - 500m
- Residential Properties within 100m
 - Properties within 100m-250m
 - Properties within 250m-500m

Residential Properties within 100m

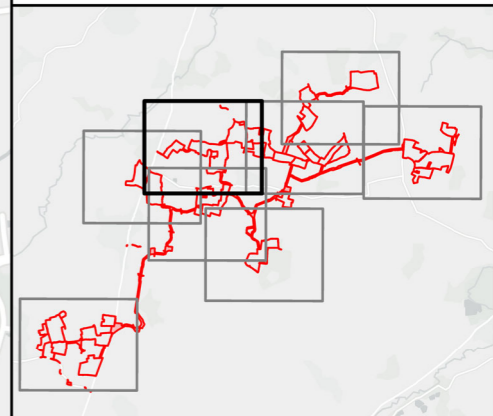
Site 7-2: Oakdene Cottage

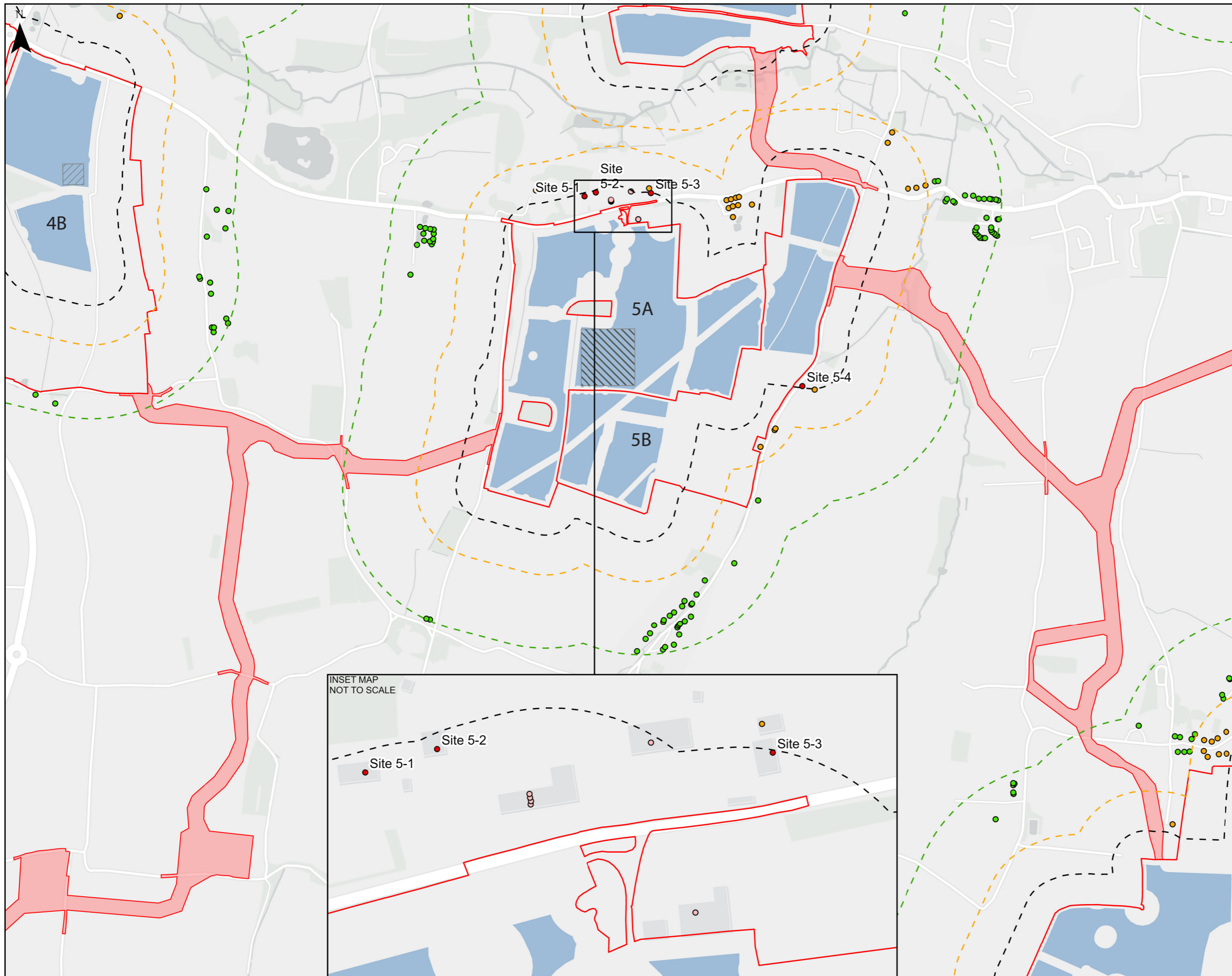




- LEGEND:**
- Site Boundary
 - Cable Route Corridor
 - Works No.1
 - Works No.3b
- Buffers taken from Scheme
- 100m
 - 250m
 - 500m
- Residential Properties within 100m
 - Non-residential Properties within 100m
 - Properties within 100m-250m
 - Properties within 250m-500m

Residential Properties within 100m
 Site 7-1: Friends House & Annexe





LEGEND:

- Site Boundary
- Cable Route Corridor
- Works No.1
- Works No.3a
- Works No.3b

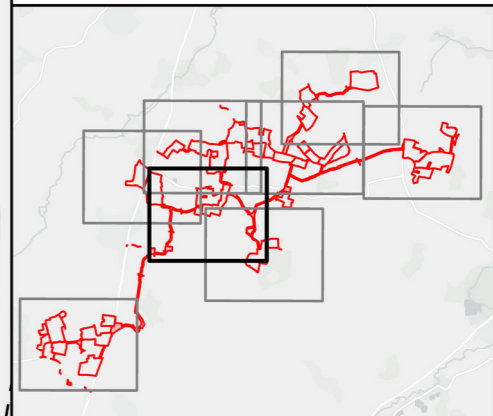
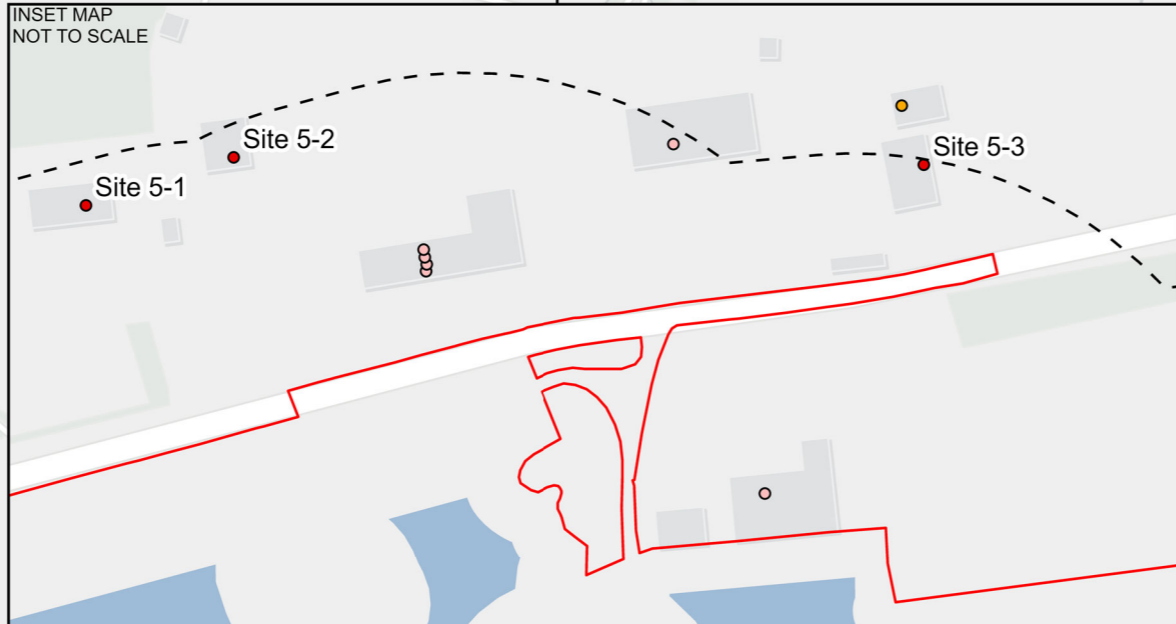
Buffers taken from Scheme

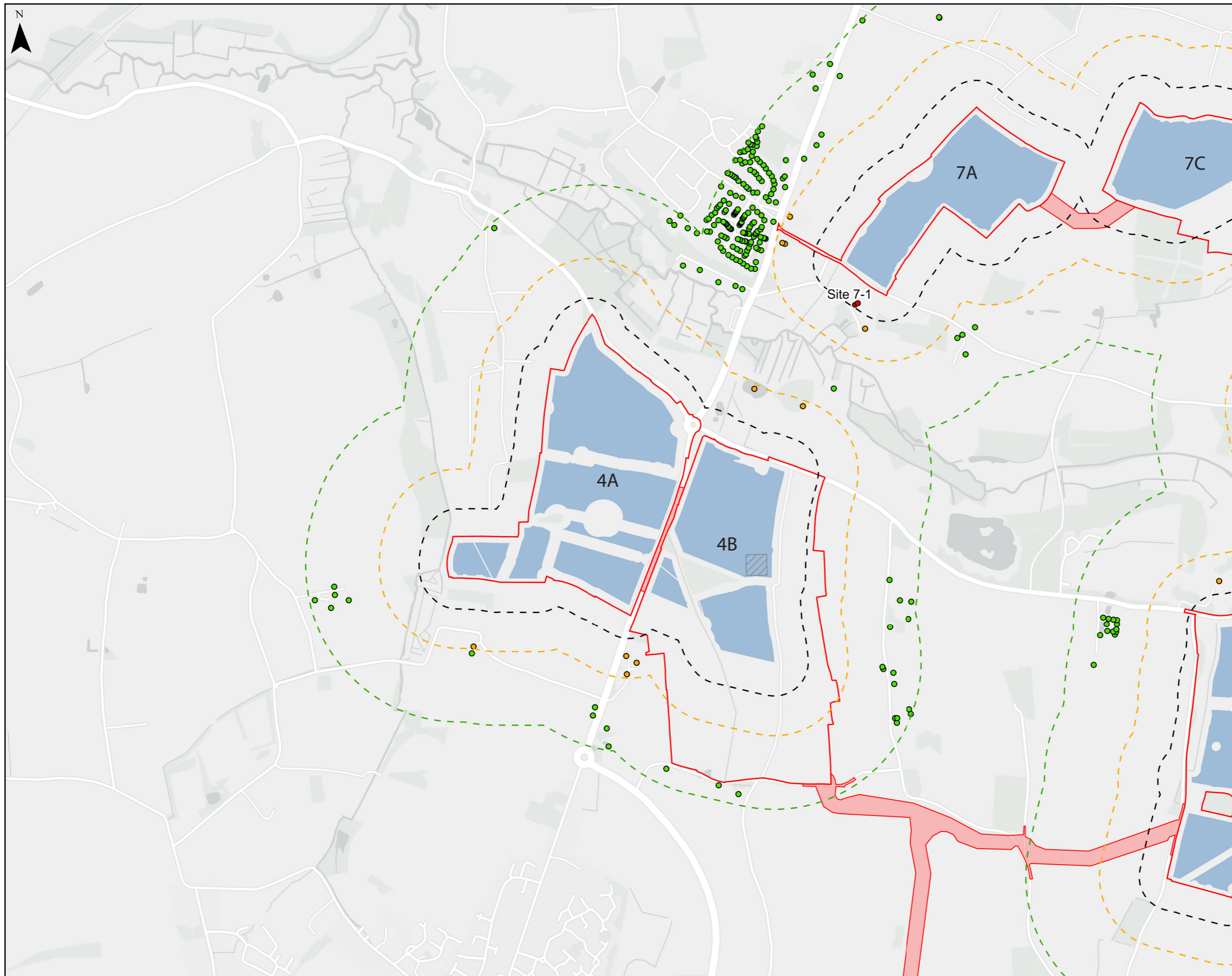
- 100m
- 250m
- 500m

- Residential Properties within 100m
- Non-residential Properties within 100m
- Properties within 100m-250m
- Properties within 250m-500m

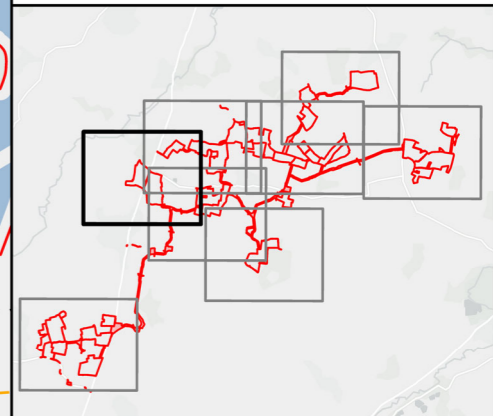
Residential Properties within 100m

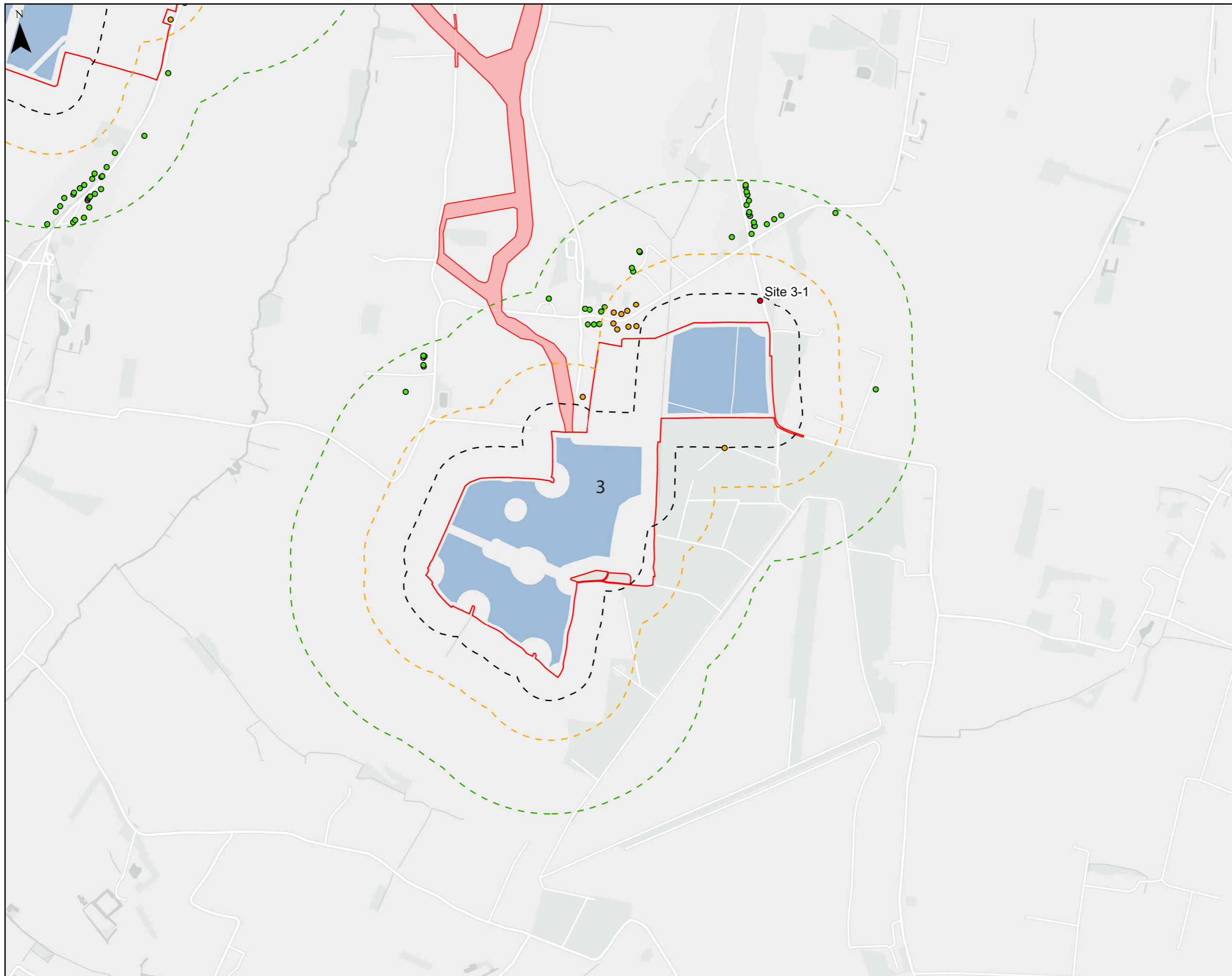
- Site 5-1: Boyland House
- Site 5-2: Willow Lodge
- Site 5-3: The Bungalow Boylands Gardens
- Site 5-4: Beech Farm





- LEGEND:**
- Site Boundary
 - Cable Route Corridor
 - Works No.1
 - Works No.3b
- Buffers taken from Scheme
- 100m
 - 250m
 - 500m
- Residential Properties within 100m
 - Non-residential Properties within 100m
 - Properties within 100m-250m
 - Properties within 250m-500m
- NO Residential Properties within 100m**





LEGEND:

- Site Boundary
- Cable Route Corridor
- Works No.1

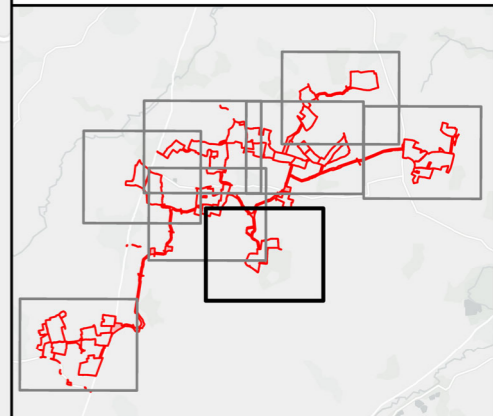
Buffers taken from Scheme

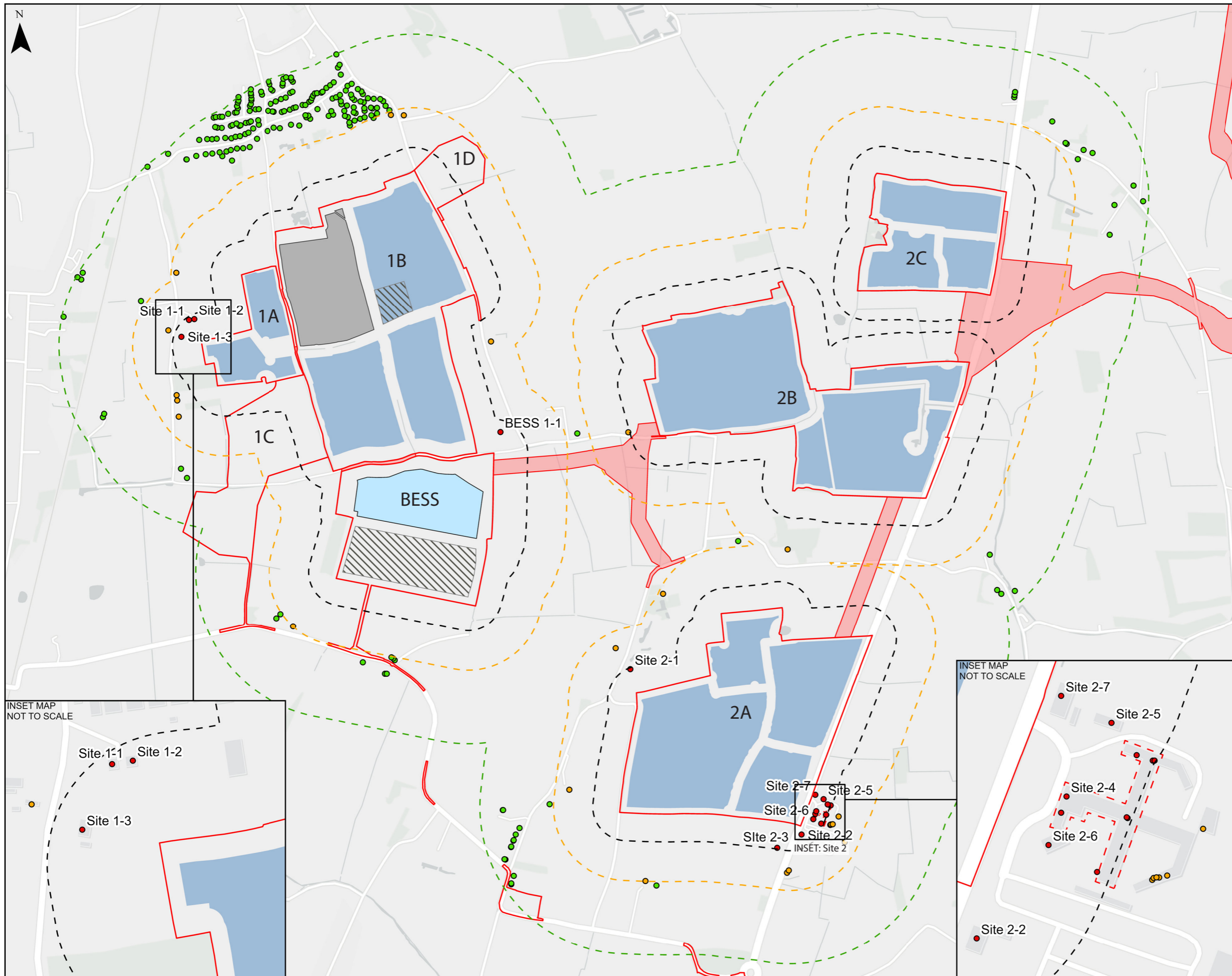
- - - 100m Buffer
- - - 250m Buffer
- - - 500m Buffer

- Residential Properties within 100m of Proposed Development Parameters
- Properties within 100m-250m of Proposed Development Parameters
- Properties within 250m-500m of Proposed Development Parameters

Residential Properties within 100m of Proposed Development Parameters for Site 3

Site 3-1: Plumtree Cottage





- LEGEND:**
- Site Boundary
 - Cable Route Corridor
 - Works No.1
 - Works No.2
 - Works No.3a
 - Works No.3b
 - Works No.4
 - Hillcrest Court Outline Within 100m
- Buffers taken from Scheme**
- 100m
 - 250m
 - 500m
- Residential Properties within 100m**
- Residential Properties within 100m
 - Properties within 100m-250m
 - Properties within 250m-500m

- Residential Properties within 100m**
- BESS 1-1: Frith Farm**
- Site 1-1: 1 Broadgate Lodge Bungalow**
Site 1-2: 2 Broadgate Lodge Bungalow
Site 1-3: New House Farm
- Site 2-1: Cherry Tree Barn**
Site 2-2: The Old Queens Head
Site 2-3: Homefields
Site 2-4: Hillcrest Court (Apartments)
Site 2-5: Chapel Cottage
Site 2-6: Hill House
Site 2-7: The Workhouse Chapel

